

# DIETRICH SLURRY CLOZR OPERATING GUIDE

**DSI, INC.**

**417 STATE ROUTE 117**

**GOODFIELD, IL. 61742**

**Phone: (309) 965-5110**

**www.dsiag.com**



**CAUTION:** Do not allow children or unqualified operators to operator equipment. In addition to design and configuration of equipment, safety and accident prevention are dependent upon the awareness, concern, and proper training of personnel involved in the operation, transport, maintenance, and storage of equipment.

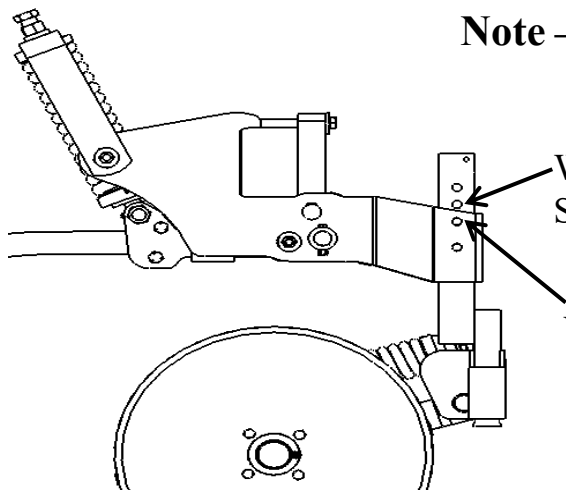
Your new **Dietrich Slurry Clozr** is designed to be mounted to the shank of the Dietrich A.R. Slurry Shank.

It is to be used continuously with the Dietrich Conical Blade Rotary/Sweep Injection System or for use as desired with the Dietrich AR Slurry Sweep Injector. When not in use, the Dietrich Slurry Clozr can be moved farther up the shank to disengage blades from the soil.

## OPERATING GUIDE

The Dietrich Slurry Clozr is designed with 2-1/2" of clearance. Allowing the slurry hose to fall backward can cause plugging. Torqueing the stover lock nut on the slurry tube bolt will keep the tube in the proper, vertical position preventing the slurry hose from resting on the Clozr & reducing tube plugging.

**IMPORTANT** – Mounting the Dietrich Slurry Clozr too low on the Shank will result in less soil movement due to less blade angle. For optimum results, the distance between the center of the bottom bolt on the Clozr Mount & the center of the top Sweep Bolt should be 11". A minimum depth of 10.5" is strongly recommended. There is no warranty for bent or broken parts if Clozr is damaged due to improper operation. Please see illustration on page 2 of this Guide.



**Note** – Clozr is designed to work best when Coulter Blade on Dietrich Injector is properly positioned.

With **Rotary operation**, the **ONLY** setting for the Snap Pin should be the **2<sup>nd</sup> hole** of the Coulter Mount.

With **Sweep operation**, the initial setting for the Snap Pin should be the **3<sup>rd</sup> hole** of the Coulter Mount.

See page 6 of your Slurry Shank Manual for more detailed instructions.

# 508100 Dietrich Slurry Clozr \*

When mounted correctly, Clozr Mount should be horizontal during field operation.



## **WARNING!**

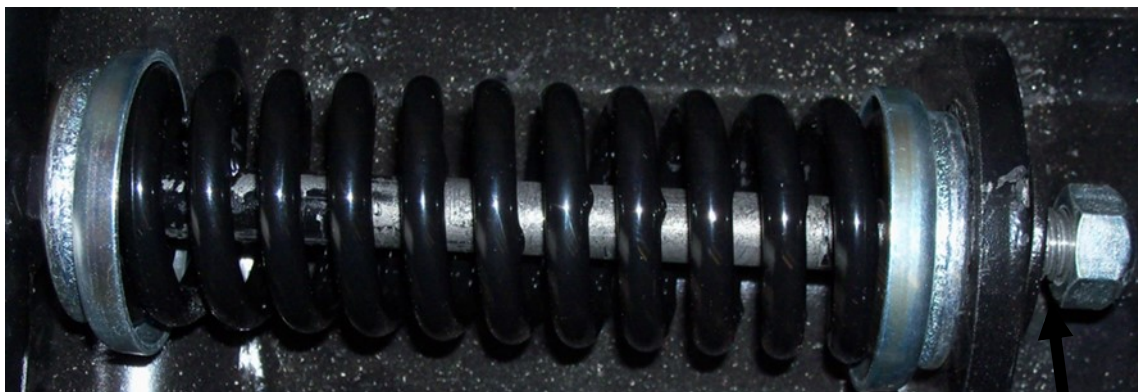
ATTACHING CLOZR TOO LOW ON SHANK  
CAN RESULT IN BREAKAGE.

**DO NOT LOWER TO ATTEMPT MORE SOIL MOVEMENT  
MOUNTING TOO LOW CAUSES LESS BLADE ANGLE  
& WILL RESULT IN INSUFFICIENT SOIL MOVEMENT**

Preferred setting is 11" from center of top Sweep Bolt  
to center of bottom Clozr Mount Bolt  
A minimum depth of 10.5" is strongly recommended.

\*Shown with Dietrich Rotary Injection 4" Discharge Tube & Bracket  
For use with 2-1/2" & 3" hoses

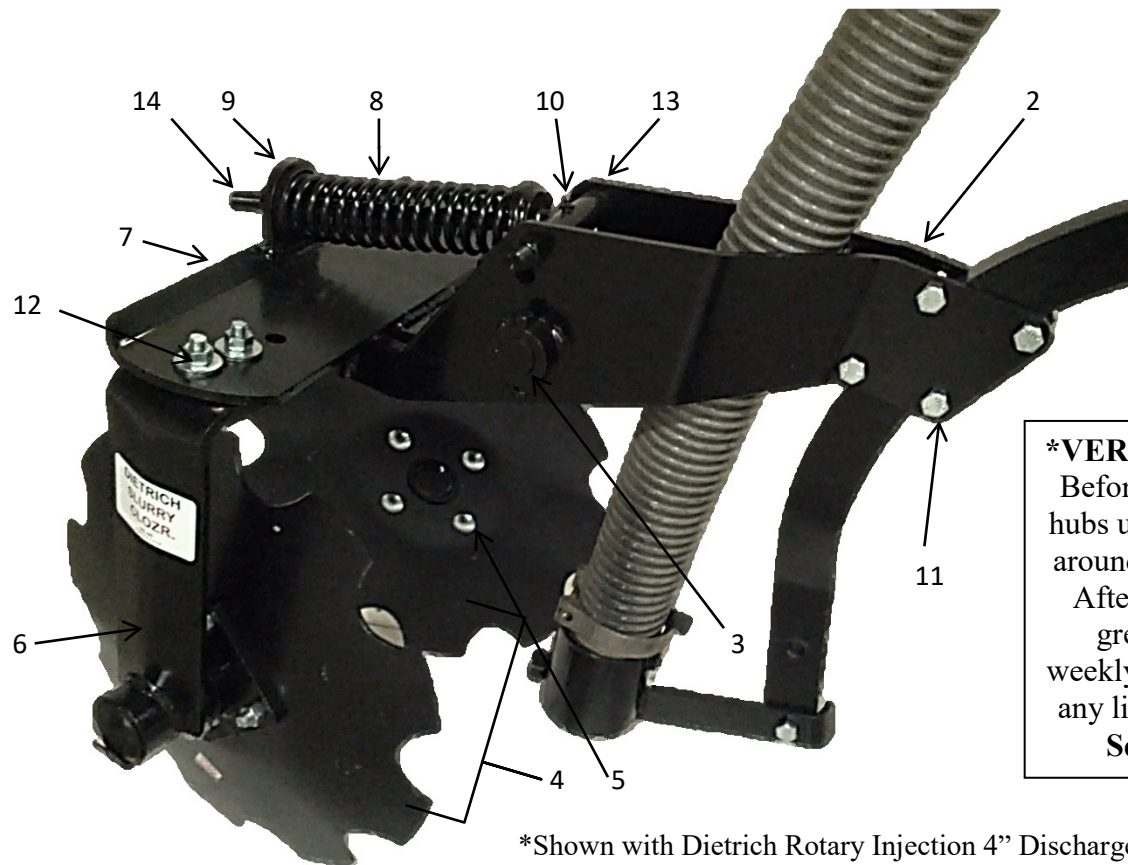
## **DIETRICH SLURRY CLOZR SPRING BOLT ADJUSTMENT**



Minimum 1/8" Gap

When operating, ideal gap is approximately 1".

# 508100 Dietrich Slurry Clozr \*



## **\*VERY IMPORTANT\***

Before use, grease both hubs until grease appears around protective collar.

After initial greasing, grease hubs twice weekly. This will prevent any liquid near the seal.

**See Page 4, #11**

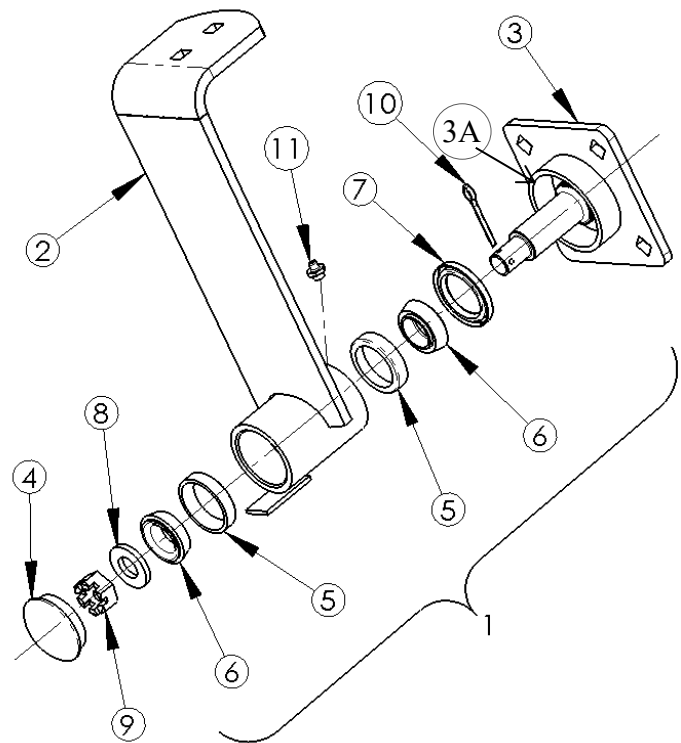
\*Shown with Dietrich Rotary Injection 4" Discharge Tube & Bracket  
For use with 2-1/2" & 3" hoses

REF, NO.	PART NO.	NO. REQ.	DESCRIPTION
1	508100	1	Dietrich Slurry Clozr Complete w/ 18" Spherical, Notched Blades
	508110	1	Dietrich Slurry Clozr Complete w/ 18.4" Flat, Notched Blades
2	508250	1	Clozr Mount Plate Weldment
3	508119	1	1-1/4 x 7-1/4 Pivot Pin
4	508180	2	18" Dull, Notched Blades-Formed - shown
	508184	2	18" Notched Blades-Flat – optional blades not shown
5	508181	8	1/2 x 1" Carriage Bolt & Nut – for Blades
6	508200	2	Clozr Arm Complete w/ Hardware, Less Blade
7	508255	1	Clozr Pivot Weldment
8	508313	1	Heavy Spring
9	508310	2	Cup Washer
10	NSI	1	1/8 NPT Zerk – Spring Pivot, <b>Grease at End of Season</b>
	NSI	1	1/8 NPT Zerk – Pivot Weldment, <b>Grease Daily</b> (not visible in diagram)
	NSI	1	1/8 NPT Zerk – Hub Zerk, <b>Grease Twice Weekly</b> (shown on page 4, #11)
11	NPN	4	1/2 x 2-1/2" Hex Bolt & Nut
12	NPN	4	1/2 x 1-1/2" Arm Carriage Bolt, Nut, & Heavy Washer
13	NPN	1	Spring Pivot Bolt
14	508246	1	T-Bolt

NSI – Not a Service Item

# Clozr Arm Assembly

REF, NO.	PART NO.	NO. REQ.	DESCRIPTION
1	508201	2	Clozr Arm Complete
2	508220	1	Clozr Arm
3	508215	1	Spindle Weld
3A	NSI	1	Protective Collar
4	508211	1	Hub Cap
5	508208	2	Cup (L44610)
6	508207	2	Cone (L44649)
7	508206	1	Seal (CR 14960)
8	508209	1	3/4 Hardened Washer
9	508210	1	3/4 NF Slotted Nut
10	NSI	1	1/8 x 1 ZP Cotter Pin
11	NSI	1	1/8 NPT Zerk

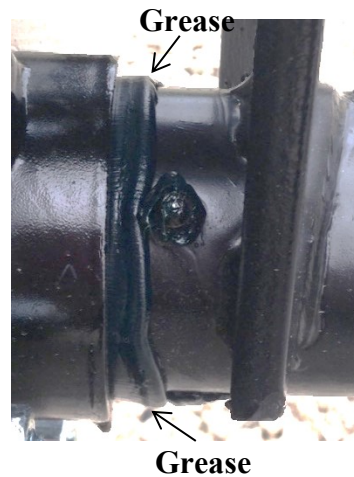


**NOTE:** Since the Clozr is subject to liquid splash, greasing twice weekly until grease is emerging around the protective collar as per instructions will provide a moisture barrier to protect the seal.

## VERY IMPORTANT

Before use, grease both hubs until grease appears around protective collar. After initial greasing, grease hubs twice weekly. This will prevent any liquid near the seal. **See #11 Grease Zerk**

Protective Collar →



## ATTACHING THE DIETRICH CLOZR ARMS

When operating the Dietrich Slurry Clozr with the 18" Spherical, Notched Blades, the ½" Arm Carriage Bolts should be inserted into the 2 slotted holes (outer holes).

When operating the Dietrich Slurry Clozr with the 18.4" Flat, Notched Blades, the ½" Arm Carriage Bolts should be inserted into the round hole & the adjacent slotted hole (inner holes).